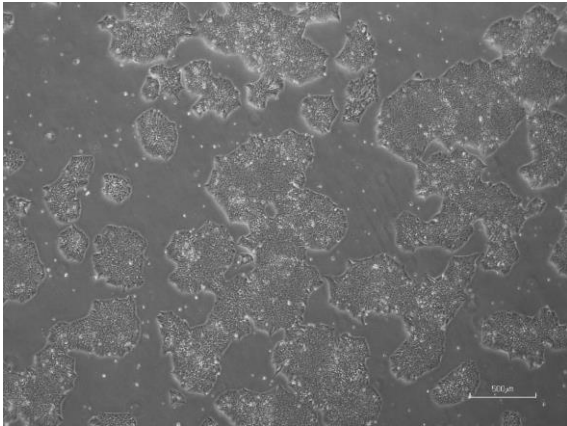
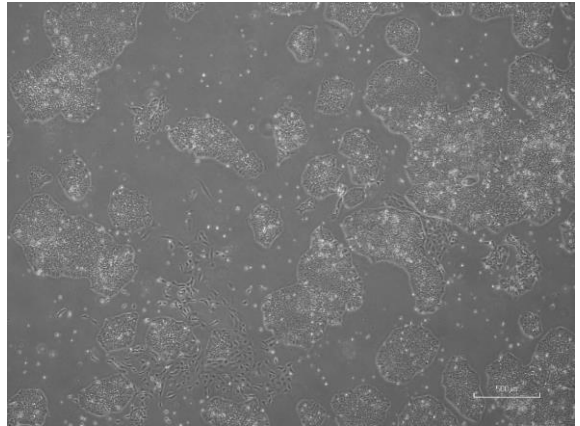


【 CiRA-jk-0103 】 Morphology of iPSC colonies

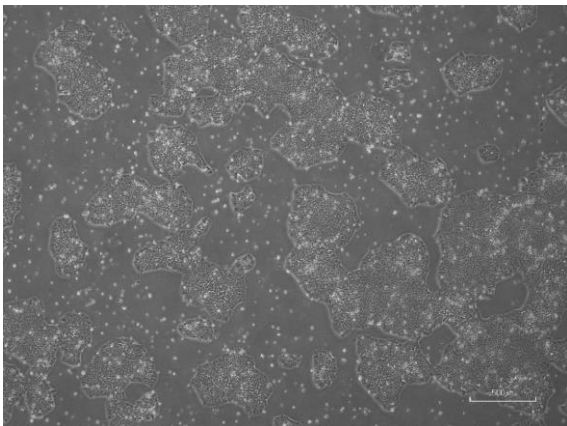
CiRA-jk-0103-A: passage-3



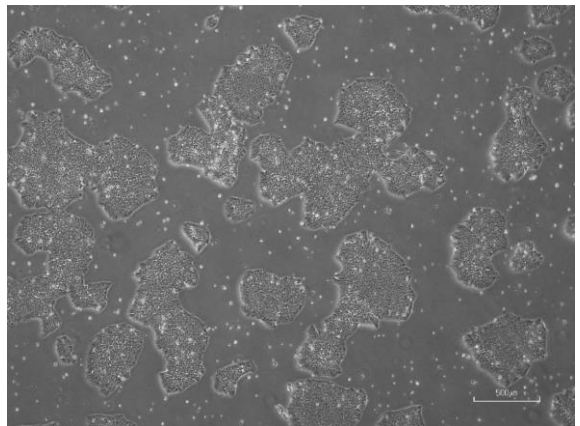
CiRA -jk-0103-B: passage-3



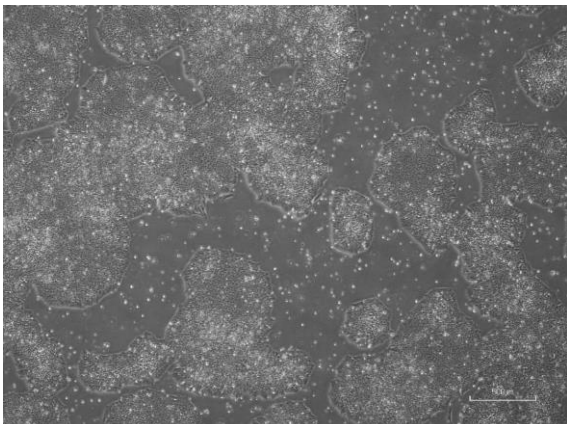
CiRA -jk-0103-C: passage-3



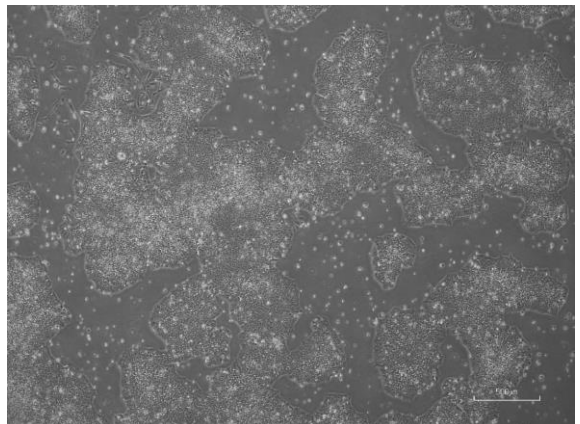
CiRA -jk-0103-D: passage-3



CiRA -jk-0103-E: passage-3



CiRA -jk-0103-F: passage-3



(All images were captured at 4x magnification)